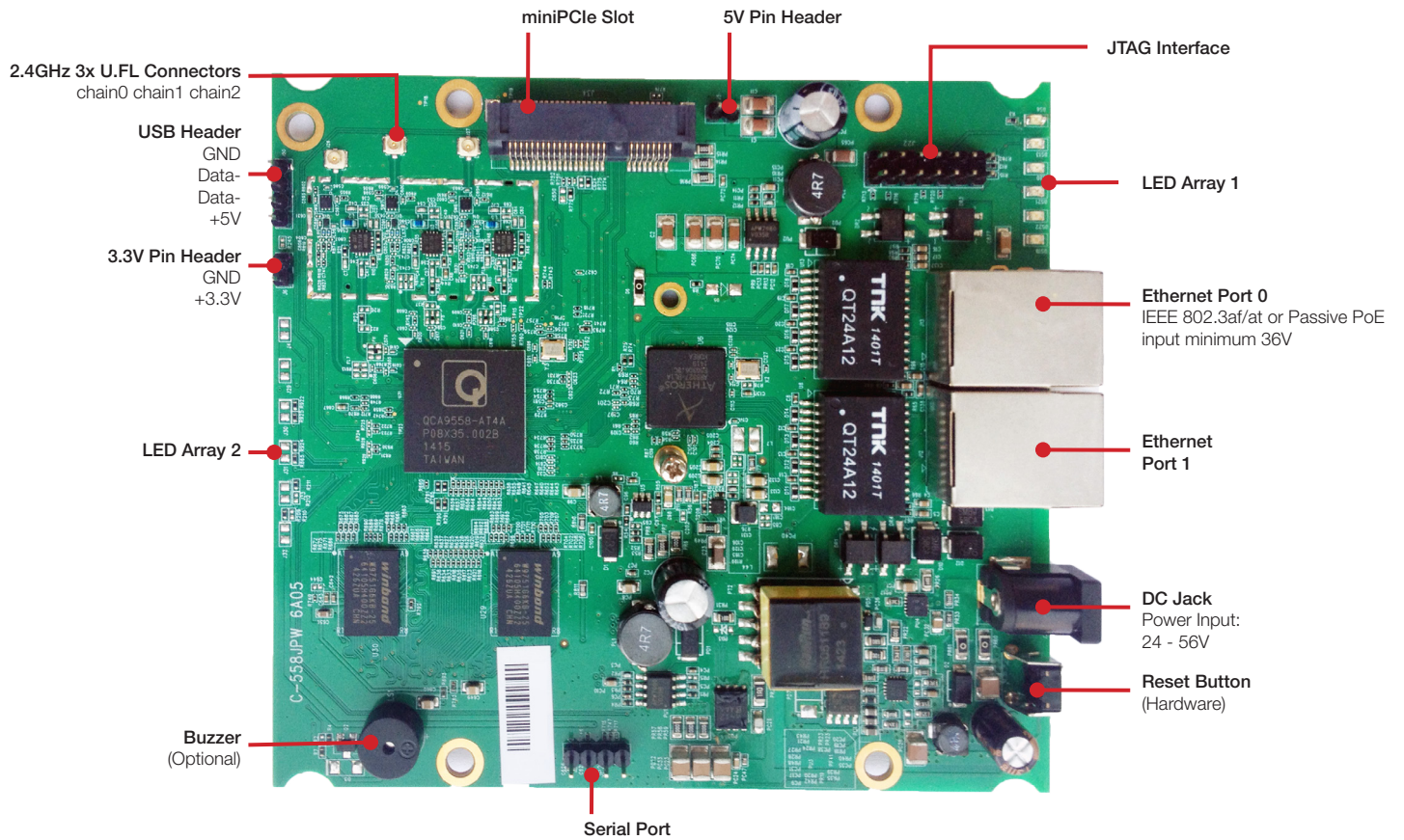


## Component Map



## Power Requirements

Power Over Ethernet 1x IEEE 802.3af/at or Passive PoE input minimum 36V

DC Power 1x DC Jack Connector: 24-56V

Power Consumption 8.6 Watts (Max)

## Ethernet 0 PINOUT

Pin	Signal
1	TX+/POE+
2	TX-/POE+
3	RX+/POE-
4	TX+/POE+
5	TX-/POE+
6	RX-/POE-
7	RX+/POE-
8	RX-/POE-

## JTAG Interface Pin Assignment

Pin	Signal	Pin	Signal
1	TRST_N	2	GND
3	TDI	4	GND
5	TDO	6	GND
7	TMS	8	GND
9	TCK	10	GND
11	RESET	12	NC
13	DINT	14	3V3

## Serial Port Pin Assignment

Pin	Signal
1	VCC – 3.3V
2	UART 0 Transmit Data
3	UART 0 Receive Data
4	GND

## LED Header

Left pin	Right pin	Function	RSS4/Diag
GND	GPIO14	RSS4/Diag	RSS4/Diag
GND	GPIO15	RSS3	RSS3
GND	GPIO22	RSS2	RSS2
GND	GPIO23V	RSS1	RSS1
GND	Ethernet1 LED	Ethernet1	Ethernet1
GND	Ethernet0 LED	Ethernet0	Ethernet0
+3.3V	GND	Power	Power

## LED Array Pin

Array 1		Array 2	
Pin	Signal	Pin	Signal
1	RSS4/Diag	1	RSS4/Diag
2	RSS3	2	RSS3
3	RSS2	3	RSS2
4	RSS1	4	RSS1
5	Ethernet	5	Ethernet1
6	Power	6	Ethernet0
		7	Power

## GPIO Pin Mapping

GPIO Pin	Function
GPIO_0	JATG TCK
GPIO_1	JTAG TDI
GPIO_2	JTAG TDO
GPIO_3	JTAG TMS
GPIO_4	BUZZER control
GPIO_5	SPI_CS
GPIO_6	SPI_CLK
GPIO_7	SPI_MI_SI
GPIO_8	SPI_MI_SO
GPIO_9	UART_SIN
GPIO_10	UART_SOUT
GPIO_11	S17_INTn
GPIO_12	EEPROM DATA
GPIO_13	for usb host mode select.
GPIO_14	RSSI 1
GPIO_15	RSSI 2/ EEPROM CLK
GPIO_16	For OTP disable
GPIO_17	reset
GPIO_18	resever
GPIO_19	resever
GPIO_20	resever
GPIO_21	For PCIE Card on /off
GPIO_22	RSSI3
GPIO_23	RSSI4

## miniPCle Slot Pin Assignment

Top side		Bottom side	
1	WAKE_L	2	+3.3V
3	NC	4	GND
5	NC	6	NC
7	CLKREQ_L	8	NC
9	GND	10	NC
11	REFCLK-	12	NC
13	REFCLK+	14	NC
15	GND	16	NC
Mechanical key			
17	NC	18	GND
19	NC	20	W_DISABLE_L
21	GND	22	PERST_L
23	PERn0	24	+3.3Vaux
25	PERp0	26	GND
27	GND	28	NC
29	GND	30	SMB_CLK
31	PETn0	32	SMB_DATA
33	PETp0	34	GND
35	GND	36	USB_D-
37	NC	38	USB_D+
39	NC	40	GND
41	NC	42	LED_WWAN_L
43	NC	44	LED_WLAN_L
45	+5V	46	LED_WPAN_L
47	+5V	48	NC
49	+5V	50	GND
51	+5V	52	+3.3V